

PART OF THE S.W. 1/4 OF SECTION 23, T.5N., R.1W., S.L.B. & M.
HIGHLANDS BLUFF ESTATES SUBDIVISION PH. 2
 IN WEBER COUNTY & AMENDED LOT 20

TAXING UNIT: 159

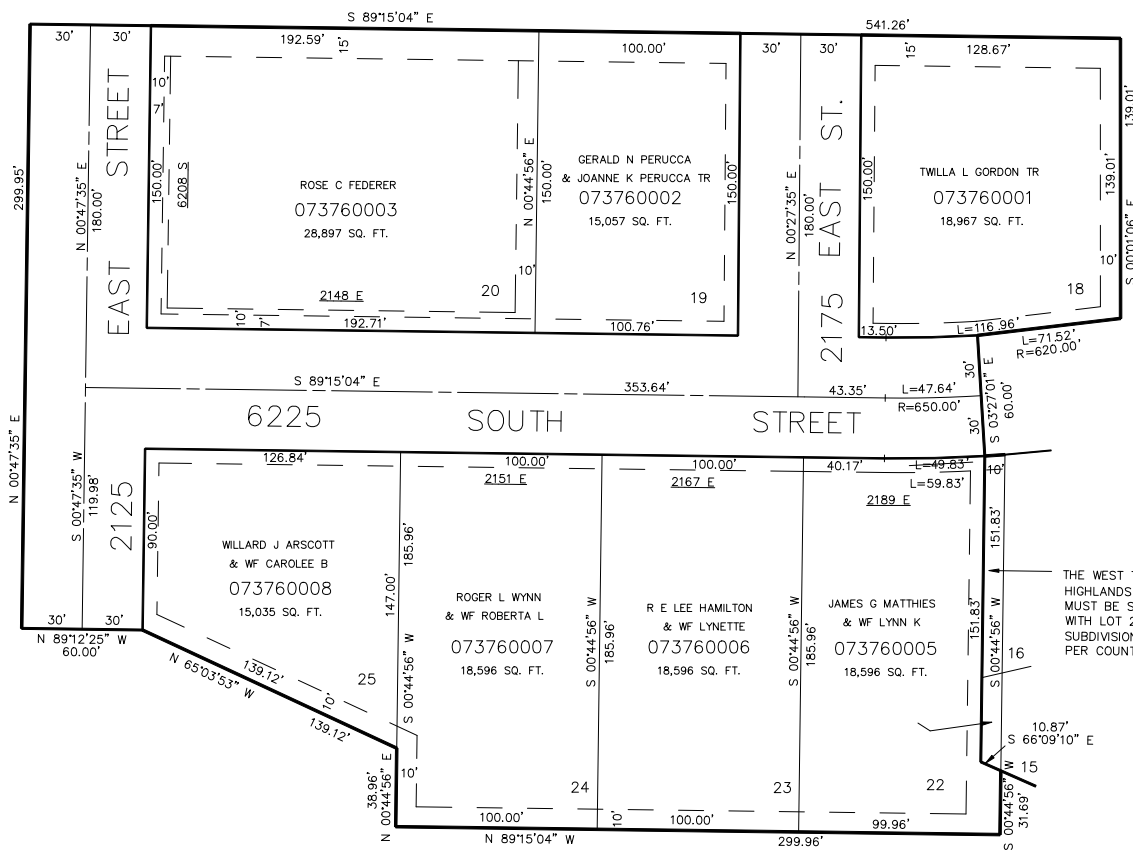
SCALE 1" = 50'

SEE PAGE 175

SEE PAGE 228

SEE
PAGE
97

SEE
PAGE
335



THE WEST TEN FEET OF LOT 15 AND LOT 16, HIGHLANDS BLUFF ESTATES SUBDIVISION PH. 1 MUST BE SOLD IN ALL INSTANCES TOGETHER WITH LOT 22, HIGHLANDS BLUFF ESTATES SUBDIVISION PH. 2 TO PROVIDE A LEGAL LOT PER COUNTY ORDINANCE.

SEE PAGE 97

7' UTILITY & DRAINAGE EASEMENTS EACH SIDE OF PROPERTY LINES AS INDICATED BY DASHED LINES EXCEPT AS OTHERWISE SHOWN.

FOR COMPLETE ENG DATA SEE ORIGINAL DEDICATION PLAT IN BOOK 32, PAGE 96 OF RECORDS.

FOR COMPLETE ENG DATA OF AMD LOT 20, SEE ORIGINAL DED. PLAT IN BOOK 40, PAGE 68 OF RECORDS.